



TABLEAUX DE FUSION

A PROJECT CATALOGUE

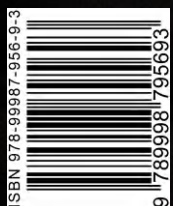
a social art project for the
celebration of the European
Capital of Culture, Esch-sur-
Alzette ESCH2022

created by

UNO

featuring:

**17 artists, 27
countries, 45
artworks and 1**



Exhibition photographs created by:

Naderi Photography SARL-s
www.naderi.lu



© UNO

Luxembourg, 2022







CONTENT

Introduction

6

About *Tableaux de Fusion*

7

The Project in Numbers

8

The Project Partners

10

The Project Creator

26

The Artists

28

The Artworks

44

INTRODUCTION

Dear readers, art lovers, artists and patrons,

After several months of intense work, at 6:30 pm on the 8th of July 2022, we were finally gathered at the art gallery 'Kamellebuttek' for the vernissage of 'Tableaux de Fusion' in Esch-sur-Alzette.

The excitement about the art works and the accomplishment of the project was, nevertheless, slightly hampered, and at first glance, I could not tell why. Then it dawned on me, public servants in Esch-sur-Alzette love their jobs and are very diligent about them, especially the ones who give parking tickets. They close by 7pm.

So, at one minute past 7pm, when parking was finally free and we could all breathe easy, the vernissage was officially opened.

Through time and around the world, art has always been a force that brings people of all works of life together. From the moment of its conception, I wanted 'Tableaux de Fusion' to do just that: bring people together. It therefore came as a pleasant surprise that almost one hundred artists and art aficionados from all ages, cultural and social backgrounds gathered at 'Kamellebuttek' Contemporary Art Gallery to take part in the opening of this one-of-a-kind social art project. From across the hall and in different corners of the gallery, you could hear people conversing in different languages, and the general atmosphere was permeated by excitement and celebration.

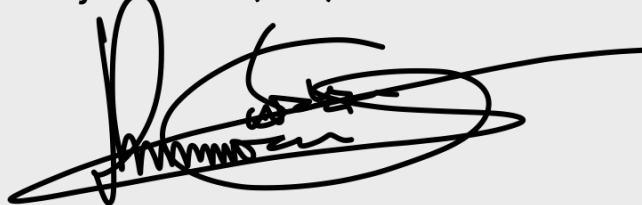
The project had encountered its fair share of challenges at every point of its implementation. A major part in the process of creating art, like managing a project, is about improvising and adapting to seemingly ever-changing situations, as well as observing and learning from past challenges and issues.

Eventually, after having encountered troubles finding a suitable venue or institutional partners, the project attracted 16 artists from different nationalities, cultures and backgrounds, but also from different art professions and technical skill. The one thing they all had in common was their passion for this project and their endeavour to contribute as much as they possibly could to it.

Without the participating artists' tenacity and excitement for this project, the strong support from my assistant, Anne Lommel, the ESCH2022 team, the gallery managers Raphael Gindt and Daniel McLloyd, as well as the love and support of my family and friends, I would simply have been unable to bring this project to fruition. I guess that is the true essence of a social project of this size: the theory of cooperation and collaboration has to be directly translated into reality for anything to work out. And, looking back, what we all managed to create together has most definitely been worth our efforts.

I hope that you enjoy 'Tableaux de Fusion' as presented and preserved in this catalogue whether you had the chance to see the exhibition in person, or if this is the first time you see the artworks that have been created.

Uyi Nosa-Odia (UNO)



Definition and Goals

Tableaux de Fusion, TdF is a multi-disciplinary social art project created by the Nigerian Luxembourg-based artist, Uyi Nosa-Odia (UNO), as part of the celebration of the European Capital of Culture, Esch-sur-Alzette, ESCH2022.

The project's aim is to promote cultural diversity, artistic cooperation, historical and cultural preservation through art, and the encouragement and celebration of immigration in Luxembourg and particularly, the ESCH2022 region. It involved the creation of 45 artworks representing the 19 communities of the ESCH2022 region in Luxembourg and France (Esch-sur-Alzette, Differdange, Dudelange, Villerupt, Bettembourg, Schifflange, Pétange, Kayl/Tétange, Mondercange, Rumelange, Audun-le-Tiche, Thil, Sanem, Boulange, Aumetz, Ottange, Käerjeng, Russange and Rédange), the other 25 countries of the European Union, (Estonia, Lithuania, Denmark, Netherlands, Belgium, Hungary, Austria, Germany, Finland, Poland, Italy, Ireland, Greece, Portugal, Spain, Cyprus, Czech Republic, Latvia, Malta, Slovakia, Slovenia, Bulgaria, Romania and Croatia) and 1 artwork to represent the international community.

Technical description and process

The project incorporated the works of 3 photographers, (Anne Lommel, Cathy Hilbert, and Lynn Theisen) 5 digital/graphic artists, (Dina Kim, Fred Ngo, Kodji Thierry Dossou, Nelida Taque Nanque and Nina Ballerini), and 9 painters, (Uyi Nosa-Odia UNO, Anne-Sophie Loos, Aïcha Smail, Danay Haile, Ivânia Dos Santos, Luan Luca Lamberty, Minela Kocan, Paul Alves and Timon Seul).

"The project's aim is to promote cultural diversity, artistic cooperation, historical and cultural preservation through art"

Technically, the creation processes started with the photographic documentation of historically and culturally important sceneries, places, events and people in all the 19 communities of ESCH2022 and the other 25 countries of the EU. These photographs became the foundation for graphic and digital design input. The resulting remix and fusion of photography and digital art and design were printed on canvases before paintings were applied using mostly acrylic and oil paints.

The result of this approach was the 45 artworks exhibited in Kamellebuttek Contemporary Art Gallery in Esch-sur-Alzette from 8th July to 30th September 2022. Effectively, each artwork was worked on by three or four artists. Outstandingly, the 45th artwork representing the international community was painted by art lovers and visitors during the exhibition.

TDF IN NUMBERS



NUMBER OF ARTISTS

17



NUMBER OF NATIONALITIES
DIRECTLY INVOLVED IN PROJECT

19



NUMBER OF NATIONS
PRESENTED

30



NUMBER OF PARTNER
ORGANISATIONS

5



PROJECT DURATION
IN MONTHS

13



NUMBER OF ARTWORKS
CREATED¹

45

NOTE

1. This includes 44 artworks created by artists and 1 created by visitors to the exhibition. 2. An estimated number of visitors to the exhibition in Kamellebuttek Urban Contemporary Art Gallery in Esch-sur-Alzette and at the Festival des Nations in Grevenmacher. 3. This is limited to visits and views on the project website and social media pages and does not include views on partner/collaborators pages. 4. This refers to content created for the project's publicity.

TDF IN NUMBERS



EXHIBITION DURATION
IN WEEKS

16



NUMBER OF VISITS/VIEWS
EXHIBITIONS²

350



NUMBER OF VISITS/VIEWS
ONLINE³

143,000



NUMBER OF ART
PROFESSIONS

5



NUMBER OF MEDIA CREATED⁴

72



NUMBER OF MASS-
MEDIA REPORT ABOUT
PROJECT

4

THE PROJECT PARTNERS & SPONSORS

ESCH2022 ASBL

www.esch2022.lu
info@esch2022.lu
+352 28 83 20 22

Postal & office address:
8, Avenue des Hauts Fourneaux
4362 Esch-sur-Alzette

Visitors centre:
3, Avenue des Hauts Fourneaux
4362 Esch-sur-Alzette



ESCH-SUR-ALZETTE
EUROPEAN CAPITAL
OF CULTURE

THE PROJECT PARTNERS & SPONSORS

KAMELLEBUTTEK CONTEMPORARY ART GALLERY

www.kamellebuttek.lu
hello@kamellebuttek.lu
+352 691 370 090, 621 887 463

14, Rue Marcel Reuland
4305 Esch-sur-Alzette, Luxembourg



THE PROJECT PARTNERS & SPONSORS



COMMUNAUTÉ DE COMMUNES PAYS HAUT VAL D'ALZETTE

www.ccphva.com
+33 (0) 3 82 53 50 01

390 Rue du Laboratoire
57390 Audun-le-Tiche, France



COMMUNAUTÉ DE COMMUNES
pays haut val d'alzette



THE PROJECT PARTNERS & SPONSORS

LËTZ ART ASBL

www.letztart.lu
mail@letztart.lu
+352 661 140 619

103a, Boulevard J-F Kennedy
L-4930 Bascharage, Luxembourg

A

Lëtzt
mean
poten
curre
dome

Its fou
backo



An art installation project that highlights workplace discrimination based on gender, race, origin or belief.

More

about

Art ASBL was established in 2019 with the idea of using art as a means of combating social challenges in Luxembourg. It harnesses the potentials and creativity of art to complement traditional methods currently being implemented towards the fight against domestic abuse, racism, and more.

**Lëtzt
ART**

Founding members, with their diverse cultural and professional backgrounds, all share the same passion for seeing a more inclusive,

THE PROJECT PARTNERS & SPONSORS

GAMA LETTRAGE & DESIGN

www.gamashop.lu
info@gama.lu
+352 26 44 10 85

17b, Rue du Chemin de Fer
L-8057 Bertrange, Luxembourg



ma. /











"

**Effectively, each
artwork was worked on
by three or four artists**

"



THE PROJECT CREATOR

Uyi Nosa-Odia, UNO is a Nigerian Luxembourg-based artist. Born and raised in Benin City, he learned to sculpt before going to study painting and general art in Auchi Polytechnic, Nigeria 2006. He further studied banking and finance at the University of Benin, Nigeria 2014. He earned a certificate in Economics and Informatics from the Ukhta State Technological University, Russia 2016. The artist fled his home country to Europe in 2015 after surviving a double headshot in an assassination attempt.

Since arriving in Luxembourg in 2017, he has established himself as a versatile artist with more than 20 solo and group exhibitions to his credit in Luxembourg, Germany and the UK. The self-exiled Nigerian artist mostly dedicates his art to social-cultural related topics and projects.

His works and art projects have been shown in both notable public institutions and in galleries. Some of these include: the Nigeria National Museum, Lagos; the Larochette Castle, Larochette; the Luxembourg Central Train Station, Luxembourg; and the Chambre des Salariés, Luxembourg. UNO is also the founder of Lëtzt Art, a Luxembourg non-profit organisation dedicated to creating, implementing and supporting social-art project for public benefit.

"I paint to play, to love and to speak. I make art to live my imaginations, curiosity, doubts and beliefs"

The artist and his works have been the subject of more than 10 media publications including news articles, video documentary, radio interviews, TV broadcasts, audio podcasts and news blogs. Notable among them are with the Deutsch Welle (DW), Germany, RTL, Luxembourg; Tageblatt, Luxembourg; Le Quotidien, Luxembourg, The Us People Podcast, UK. ICON Magazine, US.

More about the UNO can be found on:
www.artbyuno.com

THE ARTISTS



Anne Lommel is a Luxembourgish food & travel photographer. She studied art direction at the Miami Ad School Hamburg and did internships with agencies such as Ogilvy&Mather (Paris, London) and Digitas (San Francisco). She discovered her passion for photography during her studies at Miami Ad School Europe.

After the advertising experience, the opportunity came along with being a travel guide. She collected great experiences in Turkey (Antalya) and Greece (Kos). After two years it was clear to her that she needed to follow her creative path. Since mid-2017, she has been working as a full-time photographer.

Anne is an adventure-driven, open-minded, high-end content creator, and takes an artistic approach to each project she embarks on. Her works include assignments from companies, freelancers, agencies, and private clients. Some examples: Edition Schortgen, Post Luxembourg, Kachen Magazine, Hotel Le Place d'Armes and FAGE.

Find out more about Anne on - www.annelommel.com

THE ARTISTS



Anne-Sophie Loos

Is a Luxembourgish artist and painter. "(I am) striving to push the boundaries of reality and art through limited colours and medium."

www.annesophieloos.com

THE ARTISTS



Aïcha Smail is a self-taught French artist, her painting is inspired by Mexican and latino culture. One of her paintings was chosen to represent the Konstfestival 2018, Lelligen.

Find out more about Aïcha on:
www.aichasart.com

THE ARTISTS



Cathy Hilbert

Since childhood, Cathy has been fascinated by photography.

"I got my first camera when I was 6 (Fisher Price Perfect shot). I bought my first SLR in 2008".

She loves taking photos of nature, and as a big hiking fan, her two passions combine perfectly. Her creative process usually includes over-shooting as it offers her an opportunity to capture the "right moment" rather than digital editing.

"I like to print my photos so I can look back at nostalgic moments".

You can contact the artist here:
cathy.hilbert@hotmail.com

THE ARTISTS



Danay Haile

is an Eritrean artist living in Luxembourg. His passion for art started early in his childhood. He was inspired by cultural events such as festivals featuring art exhibitions, music and dances in his home country.

At the age of 15, "I went to art school (EUNYS) in Asmara". He also continued his art study in Luxembourg upon arrival through participations in short courses and workshops.

His artworks feature landscape, portrait, and figurative arts. Danay likes to use warm and bright colours with a dark background. He is very inspired by nature, sunsets, sunrises, and clouds.

"My artworks represent Eritrean (Habeshan), African society and my journey".

danaygdey@gmail.com

THE ARTISTS



Dina Kim

is an animation director, graphics designer, a UX/UI designer and a photographer. Dina worked in Syria for more than 20 years in animation and design before moving to Luxembourg.

Currently, she works from her studio in Luxembourg.

www.onstudio.lu

THE ARTISTS



Fred Ngo

is a designer specialised in industrial design and 3D/physical sculpture. Growing up in Paris and now based in Luxembourg his work is resulting from years of multi-disciplinary industrial experiences and a strong design curiosity. He is passionate and always willing to be part of new challenges.

ngo.frederic.pro@gmail.com

THE ARTISTS



Ivânia Dos Santos

is a self-taught multifaceted artist born and raised in Portugal and based in Luxembourg. Her work varies between different styles, media, and movements. She's not afraid to break the rules of the art world. She is truly a creative mind.

www.ivaniasantos.com

THE ARTISTS



Kodji Thierry Dossou

was born in France but moved to Luxembourg at the age of 10 with his Togolese parent. Growing up, young Kodji was greatly influenced by comics, hip-hop and beatbox. He went on to study computer graphics and 2D animation in Namur, after training with the renowned Togolese artist, Paul Ahyi.

Today, the artist's works reflect his diverse cultural exposure while developing animated characters from his African mythology, folklore and beliefs.

(Adapted from the artist's interview by France Clarinval for the Lëtzeburger Land)

www.kodji.art

THE ARTISTS

Luan Luca Lamberty

is a painter and animation artist based in Luxembourg. He studied Fine Arts (2013-2019) in the class of Prof. Heike Kati Barath at the University of Arts Bremen (HfK), Germany.

Luan is interested in how people interact in different spaces and which unwritten rules they are following. These moments captured on canvases are fusions of different experience, situations and social realities. Through composition, various ways of painting, colours, the arrangement of figures and objects, the paintings give subtle hints of what their narratives are, while still leaving much to the viewer's interpretation.

The artist employs high intensity lines, drawn gestures, or running paint, using different manners of painting as a strategy to describe character and emotion. In his works, transparent areas, opaque surfaces, gestural marks, and optical illusions are not meant to contradict each other, but to shape one unified aesthetic.

"There is a consciousness ... the paintings themselves are self-aware of their own nature"

www.luanlamberty.com



THE ARTISTS



Lynn Theisen

is a professional photographer, known for her aesthetic and colourful photographs. Born to a Luxembourgish father and a Thai mother, Lynn has lived and worked in Berlin for five years before moving to Luxembourg. She now works as a freelance photographer in Luxembourg and has a photo studio located in Luxembourg City.

www.lynntheisen.com

THE ARTISTS



Minela Kocan

is a painter from Luxembourg. She had her first exhibition in January 2022. In her paintings, in the style of children's drawings or cave art, she deals with a variety of philosophical, ethical and socially critical themes.

minela.kocan95@gmail.com

THE ARTISTS



Nelida Taque Nanque

is a multidisciplinary artist who explores themes linked to identity, immigration and labor exploitation (and often interrelated themes), thanks to a variety of artistic media, including installation, photography, design and painting.

The artist has a special predilection for photography as a form of expression. She portrays subjects that are generally ignored or overlooked in society, offering

viewers the opportunity to interact with them while questioning their roles and position in the historical framework.

"We need to be re-educated if we want a real change"

www.nelidal.com

THE ARTISTS



Nina Ballerini

is a multidisciplinary artist. Born and raised in Luxembourg to a British Italian family. She lives with her daughters and her partner in the south of Luxembourg, where she works from her studio, *Majola Sun*, named after her daughters.

Her recent projects involve textile design, pattern creation and illustration. Having graduated as a graphic designer, Nina later developed her love for textiles and patterns through projects involving children's clothing, interior design and illustration.

Her work is vibrant and colourful, a celebration of nature, life and freedom.

www.instagram.com/ninaballerini

THE ARTISTS



Paul Alves

was born in the Vosges. After starting to express himself through figurative works, Paul quickly became aware of what time inflicted on our bodies. He realised that the material, the elements, were undergoing the same ravages of time.

His paintings express what life has in store for us, with the degradation of matter, whether mineral, vegetable or organic. The Indian ink is found in all his work, it allows to bring out

the deep and authentic black which cannot be dissociated from our lives.

In this same concern of authenticity, it seemed important to him to work with natural pigments such as walnut stain and water which must be able to penetrate the canvases and become an important element in the same way as water that composes our human body.

www.paulalves.fr

THE ARTISTS



Timon Seul

is a young Luxembourgish student artist. The young chap has participated in internships and summer programmes with several popular artists to discover his artistic path and develop his painting skills.

"A true sprezzatura it is, how some people have a kind of 'God urge' to urgently manipulate their silent environment after their own kind. So to speak, artists give a touch of the 'ego' to the 'non-ego'. This knowledge shows that art is an active process, not passive at all"

THE ARTWORKS

ESCH-SUR-ALZETTE

100 x 95 CM

Anne Lommel (Photography)

Nelida Taque Nanque (Graphics design)

Minela Kocan (Painting)

Themes

Bridges, Past & Future, People, Movement







DIFFERDANGE

130 x 75 CM

Anne Lommel (Photography)

Dina Kim (Graphics design)

UNO, Timon Seul (Painting)

Themes

Street Art, Legacy, Renewal, Culture, Place



THE ARTWORKS

PÉTANGE

100 x 80 CM

Anne Lommel (Photography)

Nina Ballerini (Graphics design)

Timon Seul (Painting)

Themes

Scenery, People, Place, Community



BASCHARAGE/KÄERJENG

130 x 80 CM

Anne Lommel (Photography)

Nina Ballerini (Graphics design)

UNO (Painting)

Themes

Legacy, Place, People







DUDELANGE

130 x 80 CM

Anne Lommel (Photography)
Kodji Thierry Dossou (Graphics design)
UNO (Painting)

Themes
Community, Place, Continuity, People



THE ARTWORKS



RUMELANGE

100 x 100 CM

Anne Lommel (Photography)
Dina Kim (Graphics design)
Minela Kocan (Painting)

Themes

*Legacy, People, Past & Future,
Labour, Movement*



KAYL/TÉTANGE

90 x 85 CM

Anne Lommel (Photography)
Nina Ballerini (Graphics)
UNO (Painting)

Themes

Peace, People, Community













THE ARTWORKS



THIL

80 x 50 CM

Anne Lommel (Photography)

Fred Ngo (Graphics design)

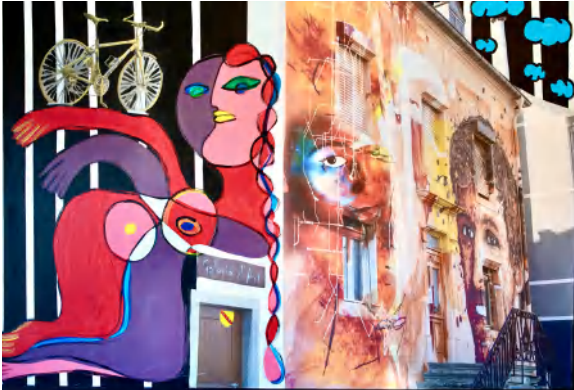
UNO (Painting)

Themes

Place, Community, History, Bridges,



THE ARTWORKS



SCHIFFFLANGE

135 x 90 CM

Anne Lommel (Photography)
Nelida Tarque Nanque (Graphics)
Ivânia Dos Santos (Painting)

Themes:
Artistry, Place, Documentation



MONDERCANGE

130 x 75 CM

Anne Lommel (Photography)
Dina Kim (Graphics design)
Ivânia Dos Santos (Painting)

Themes:
Place, People, Legacy, Community



SANEM

125 x 80 CM

Anne Lommel (Photography)
Fred Ngo (Graphics design)
Ivânia Dos Santos (Painting)

Themes:
Labour, People, History, Movement



BETTEMBOURG

130 x 75 CM

Anne Lommel (Photography)
Dina Kim (Graphics design)

Themes:
Future, Scenery, Hope

THE ARTWORKS



AUDUN-LE-TICHE

60 x 60 CM

Anne Lommel (Photography)
Dina Kim (Graphics)
Paul Alves (Painting)

Themes:
People, History



RÉDANGE

60 x 60 CM

Anne Lommel (Photography)
Dina Kim (Graphics)
Luca Luan Lamberty (Painting)

Themes:
Place, Community, Legacy



RUSSANGE

60 x 60 CM

Anne Lommel (Photography)
Dina Kim (Graphics)
Aïcha Smail (Painting)

Themes:
Movement, People, Legacy



VILLERUPT

80 x 80 CM

Anne Lommel (Photography)
Fred Ngo (Graphics design)
UNO (Painting)

Themes:
Past & Future, Legacy, Place



BOULANGE

60 x 60 CM

Anne Lommel (Photography)
Nina Ballerini (Graphics)
Anne-Sophie Loos (Painting)

Themes:
Place, People, Community



OTTANGE

75 x 75 CM

Anne Lommel (Photography)
Dina Kim (Graphics design)
UNO (Painting)

Themes:
Religion & Culture,

THE ARTWORKS



AUMETZ

60 x 100 CM

Anne Lommel (Photography)

Nina Ballerini (Graphics)

Anne-Sophie Loos (Painting)

Themes

Education, Legacy, Community













GERMANY

100 x 75 CM

Shutterstock (Photography)

Fred Ngo (Graphics design)

UNO (Painting)

Themes

Nature, Industry, Folklore, Culture





NETHERLANDS

135 x 90 CM

Anne Lommel (Photography)
Nelida Taque Nanque (Graphics design)
Minela Kocan (Painting)

Themes
People, Legacy, Culture, Freedom



THE ARTWORKS



AUSTRIA

91 x 65 CM

Shutterstock (Photography)
Fred Ngo (Graphics design)
UNO (Painting)

Themes:

Nature, People, Community



SLOVAKIA

80 x 53 CM

Shutterstock (Photography)
Kodji Thierry Dossou (Graphics design)
UNO (Painting)

Themes:

History & Monuments, People, Place



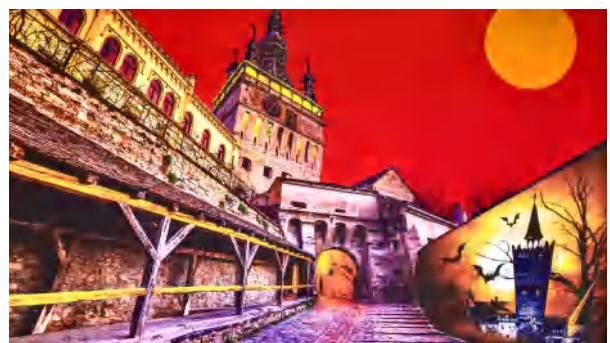
CZECH REPUBLIC

135 x 85 CM

Anne Lommel (Photography)
Kodji Thierry Dossou (Graphics design)
Minela Kocan (Painting)

Themes:

Festival, People, Culture, Place



ROMANIA

80 x 45 CM

Shutterstock (Photography)
Dina Kim (Graphics design)
UNO (Painting)

Themes:

Monument, People, Folklore

THE ARTWORKS

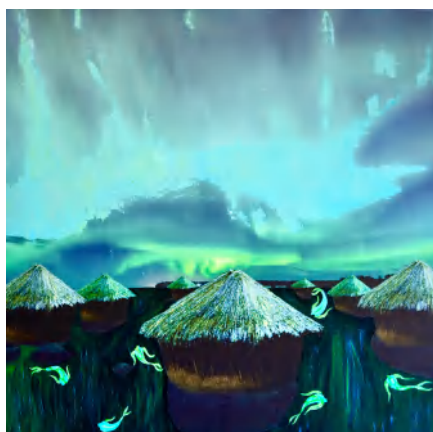


BULGARIA

70 x 70 CM

Shutterstock (Photography)
Fred Ngo (Graphics)
UNO (Painting)

Themes:
Festival, People, Culture,
Costume



FINLAND

75 x 75 CM

Shutterstock (Photography)
Nelida Taque Nanque (Graphics)
Ivânia Dos Santos (Painting)

Themes:
Nature, Time, Place

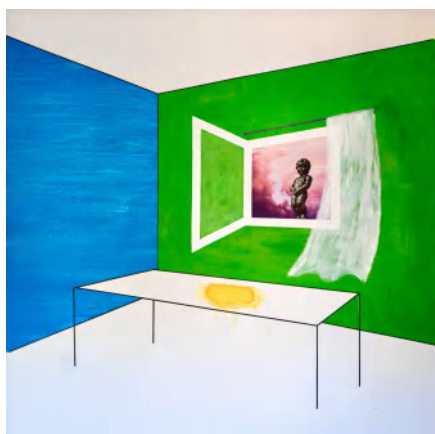


SWEDEN

60 x 60 CM

Shutterstock (Photography)
Kodji Thierry Dossou (Graphics)
Luan Luca Lamberty (Painting)

Themes:
Place, Scenery, Nature



BELGIUM

100 x 100 CM

Nelida Taque Nanque (Graphics)
Luca Luan Lamberty (Painting)

Themes:
Humour, Legacy, Culture

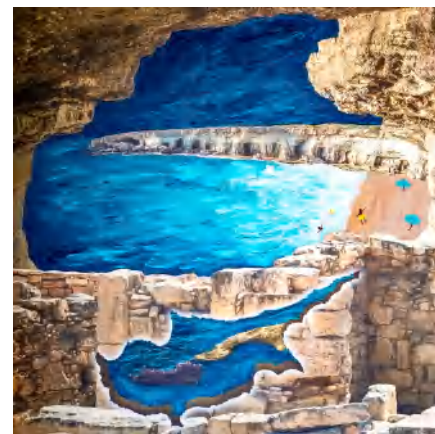


ESTONIA

80 x 80 CM

Shutterstock (Photography)
Fred Ngo (Graphics design)
Timon Seul (Painting)

Themes:
Folklore, Nature, Fantasy



CYPRUS

70 x 70 CM

Shutterstock (Photography)
Fred Ngo (Graphics design)
Ivânia Dos Santos (Painting)

Themes:
People, Nature, Vacation

THE ARTWORKS



ITALY

80 x 125 CM

Lynn Theisen (Photography)
Kodji Thierry Dossou (Graphics design)
Minela Kocan (Painting)

Themes

Place, People, Recreation



THE ARTWORKS



GREECE

125 x 80 CM

Anne Lommel (Photography)
Kodji Thierry Dossou (Graphics design)
Aïcha Smail (Painting)

Themes:

Place, People, Landscape



DENMARK

135 x 75 CM

Anne Lommel (Photography)
Nelida Taque Nanque (Graphics design)
Minela Kocan (Painting)

Themes:

Movement, People, Place



MALTA

135 x 90 CM

Anne Lommel (Photography)
Kodji Thierry Dossou (Graphics design)
Danay Haile (Painting)

Themes:

Place, People, Frontiers



CROATIA

135 x 75 CM

Nina Ballerini (Graphics design)
UNO (Painting)

Themes:

Movement, People, Labour, Nationhood

THE ARTWORKS



LITHUANIA

70 x 70 CM

Shutterstock (Photography)
Dina Kim (Graphics)
Paul Alves (Painting)

Themes:
Culture, People, Costumes



LATVIA

70 x 70 CM

Shutterstock (Photography)
Kodji Thierry Dossou (Graphics)
Ivânia Dos Santos (Painting)

Themes:
Culture, People, Folklore, Festival



IRELAND

70 x 70 CM

Shutterstock (Photography)
Nelida Taque Nanque (Graphics)
Minela Kocan (Painting)

Themes:
Monument, People, Past & Future



POLAND

95 x 95 CM

Shutterstock (Photography)
Nelida Taque Nanque (Graphics)

Themes:
People, Culture, Festivity

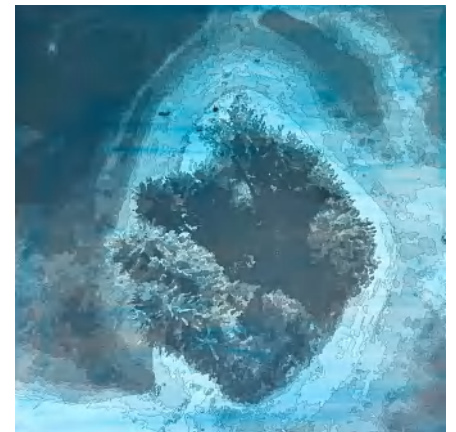


PORTUGAL

75 x 75 CM

Anne Lommel (Photography)
Kodji T. Dossou (Graphics)
Ivânia Dos Santos (Painting)

Themes:
Frontiers, People, Culture, Legacy



SLOVENIA

75 x 75 CM

Cathy Hilbert (Photography)
Kodji Thierry Dossou (Graphics)
UNO (Painting)

Themes:
Nature, Place

THE ARTWORKS



SPAIN

80 x 125 CM

Anne Lommel (Photography)
Kodji Thierry Dossou (Graphics design)
Luca Luan Lamberty (Painting)

Themes
Place, People, Recreation



HUNGARY

80 x 130 CM

Shutterstock (Photography)
Nina Ballerini (Graphics design)

Themes
Recreation, People, Community



























